

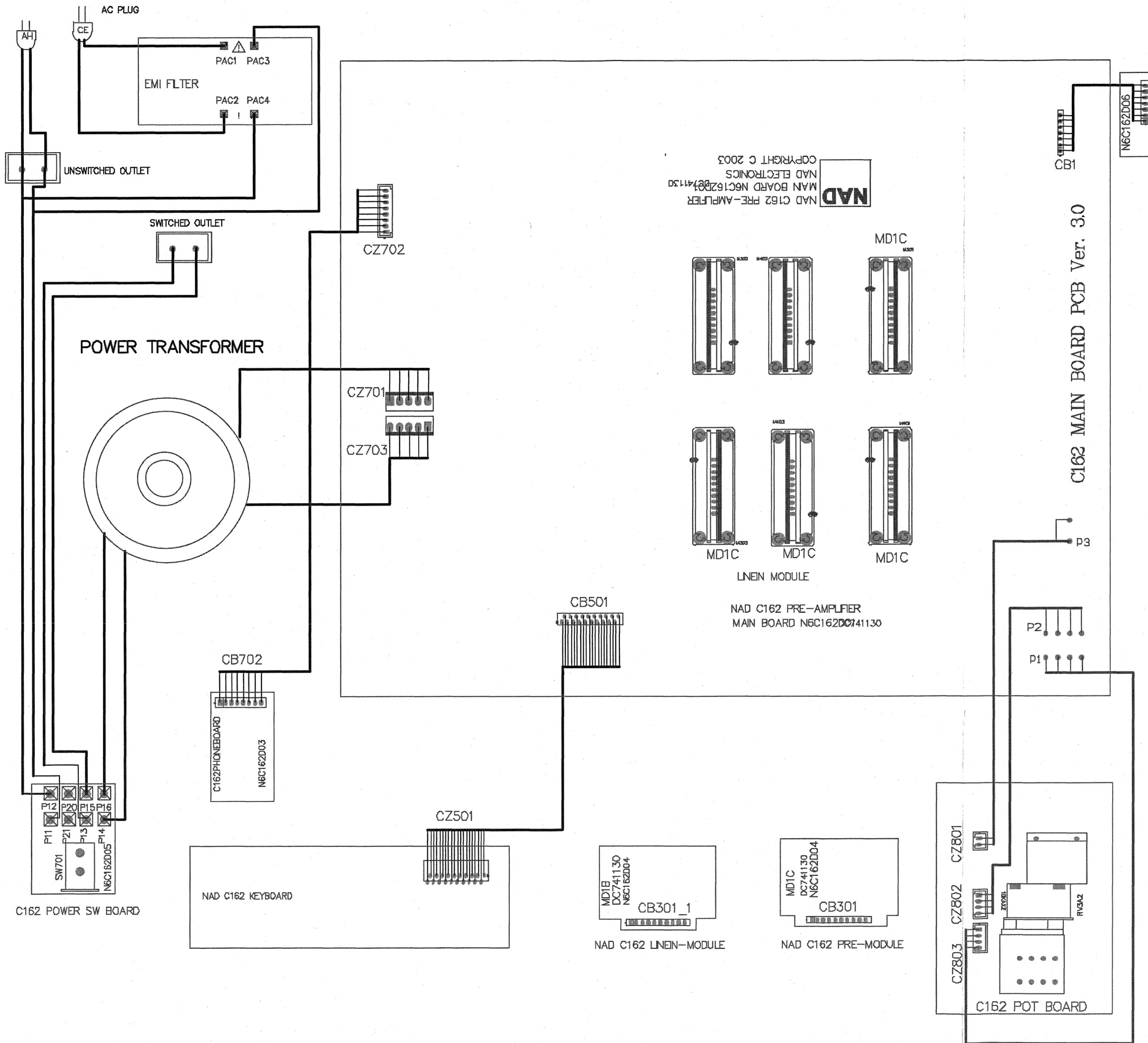
SERVICE MANUAL

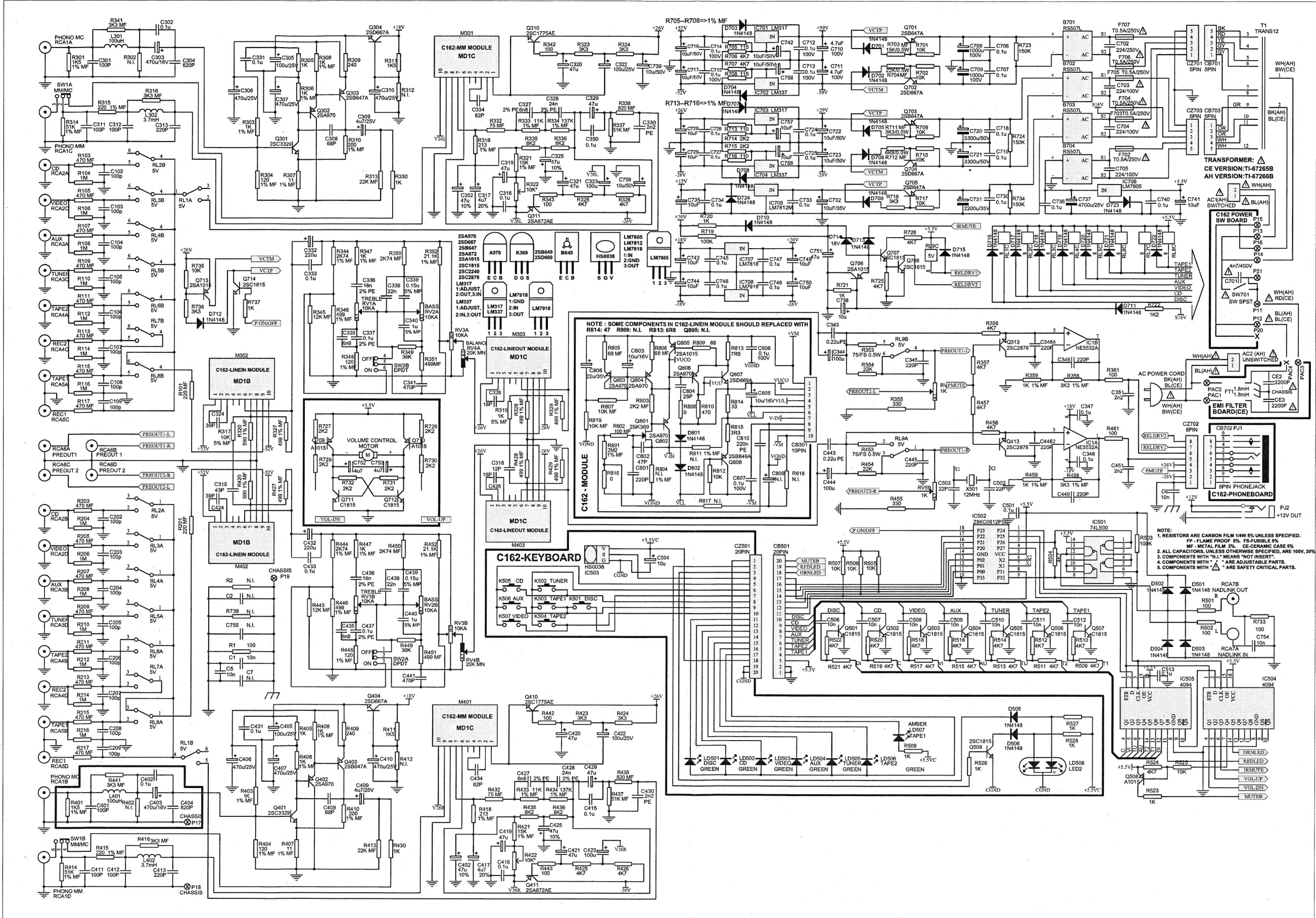
NAD

**STEREO
PREAMPLIFIER**

C 162

**STEREO
PREAMPLIFIER**

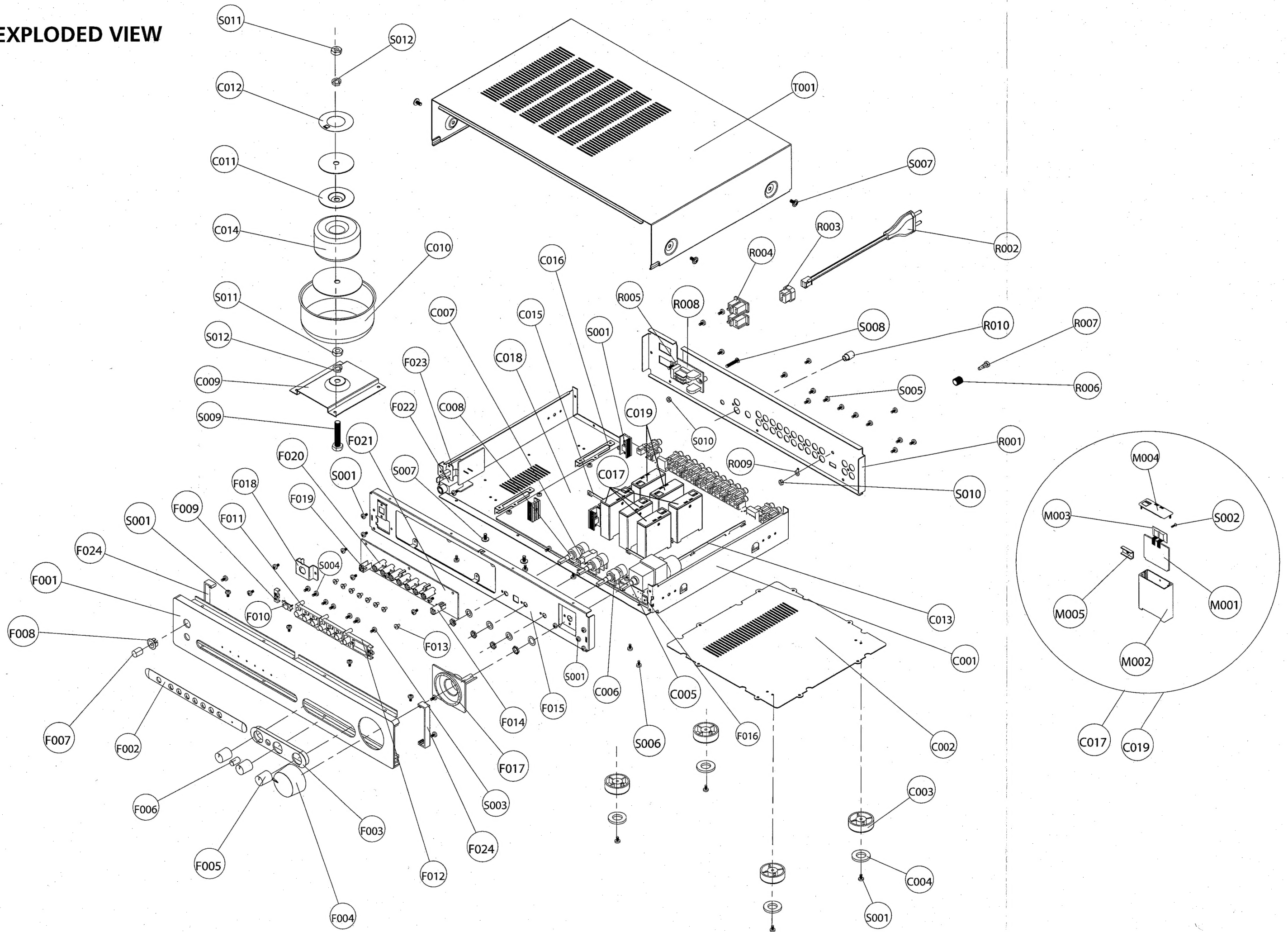




NOTE: SOME COMPONENTS IN C162-LINEIN MODULE SHOULD BE REPLACED WITH
 R814: 47K R809: N.I. R813: 68K Q805: N.I.

1. RESISTORS ARE CARBON FILM 1/4W 5% UNLESS SPECIFIED. FP - FLAME PROOF 5%. FS - FUSIBLE 5%. MF - METAL FILM 2%. CE - CERAMIC CASE 5%.
2. ALL CAPACITORS, UNLESS OTHERWISE SPECIFIED, ARE 100V, 50%.
3. COMPONENTS WITH "N.I." MEANS "NOT INSERT".
4. COMPONENTS WITH "*" ARE ADJUSTABLE PARTS.
5. COMPONENTS WITH "Δ" ARE SAFETY CRITICAL PARTS.

EXPLODED VIEW



EXPLODED VIEW PARTS LIST

REF. NO	PART NO.	DESCRIPTION	QTY.	REF. NO	PART NO.	DESCRIPTION	QTY.
C001	66-026002-1	Chassis	1	F020	75-003001-0	Sleeve(7P)	1
C002	66-025003-0	Base Cover	1	F021	01-16020-00	Assembled Tack Switch PCB	1
C003	75-010004-1	Foot	4	F022	17-02001-00	Headphone Jack	1
C004	78-001002-0	Foot Pad	4	F023	16-16205-00	Assembled Power Switch PCB	1
C005	09-01103-08	Volume POT	1	F024	66-009007-0	End Cap R	1
C006	09-01203-00	Balance POT	1	R001	67-025001-0	Rear Panel C Version	1
C007	09-01103-04	Treble and Bass POTs	2		67-025002-0	Rear Panel AH Version	1
C008	11-02202-00	Push Switch	1	R002	15-02251-21	AC Cord C Version	1
C009	66-001010-0	Transformer Bracket	1		15-10121-10	AC Cord AH Version	1
C010	67-003006-0	Transformer Shielding Box	1	R003	84-001002-0	Strain Relief Bushing	1
C011	66-003004-0	Metal Disc	1	R004	17-07002-10	AC Outlets	2
C012	94-003002-0	Transformer Label	1	R005	85-005001-0	PCB Support	2
C013	69-002006-0	Bas Bar (2)	1	R006	71-003002-0	Grd. Post Cap	1
C014	18-16040-20	Mains Transformer C Version	1	R007	71-003001-0	Grd. Post Bolt	1
	18-16040-10	Mains Transformer AH Version	1	R008	01-16070-00	EMI Filter PCB	1
C015	69-002007-0	Bas Bar (3)	1	R009	73-003001-0	Rotate Knob	1
C016	66-002007-0	PCB Support	2	S001	61-023106-0	Self Taping Screw, STB3x6	56
C017	01-16204-10	Assembled Module 301 401 303 403	4	S002	61-062108-0	Self Taping Screw, STF2x8-0	6
C018	01-16010-01	Assembled Main Board	1	S003	61-082204-6	Self Taping Screw, BTB2.6x6	2
C019	01-16204-20	Assembled Module M302, M402	2	S004	61-022206-6	Self Taping Screw, STPW2.6x4	7
F001	67-025004-0	Fascia	1	S005	61-023208-0	Self Taping Screw, BTB3x8	19
F002	77-001002-1	Input Button Lozenge		S006	61-023108-0	Self Taping Screw, STB3x8	4
F003	77-001001-1	Tone Control Lozenge	1	S007	61-084108-0	Self Taping Screw, STPW4x8	8
F004	73-014002-1	Volume Knob	1	S008	61-024520-0	Machine Screw, MB4x8	2
F005	73-014001-1	Tone Knob	3	S009	64-108045-0	Bolt, M8x45	1
F006	77-002002-1	Tone Button	1	S010	62-010402-0	Nut, M4	3
F007	77-001006-1	Power Button	1	S011	62-010802-0	Nut, M8	2
F008	77-001007-1	Power Button Bezel	1	S012	63-020820-0	Spring Washer, M8	2
F009	75-003003-0	Fixing Bracket	2	M001	01-16204-01	Assembled Module PCB NSP	4
F010	76-001001-0	IRS Lens	1	M002	70-002004-0	Module Case	6
F011	74-001002-1	Input Button (3P)	2	M003	78-005004-0	Insulated Cushion	6
F012	74-003001-1	Input Button (1P)	1	M004	75-003004-0	Module Lid	6
F013	76-003001-0	Led Lens	8	M005	66-002009-0	Trans.Clamp (Module)	6
F014	75-003002-0	Sleeve (1P)	1	T001	67-025003-0	T-Cover	1
F015	66-025001-0	Subfascia	1				
F016	66-010010-0	Support 6	2				
F017	77-025001-0	Knob Button Bezel	1				
F018	66-003005-0	Bracket (PH.)	1				
F019	66-003003-0	IR Bracket	1				